

Mounting Channels

Universally slotted mounting channel profile

Material specifications	
Material	DX51D or Equivalent steel DD11 or Equivalent steel
Coatings	Galvanized, Hot-Dip Galvanized (HDG), Powder Coating*, Zinc Magnesium*

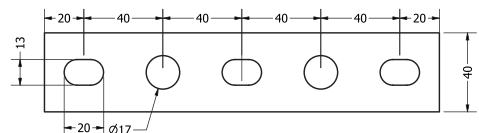
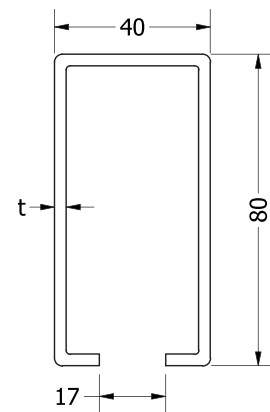


Applications

- Installation of medium to heavy-duty ventilation ducts, plumbing & firefighting pipes and cable trays
- Secondary support structure for installation of different services.

Features & Benefits

- Wide range of mounting options in conjunction with our FXC mounting channel accessories
- Quick and efficient attachment of multiple support structure
- Lateral and vertical adjustment with reliable fastening
- High load bearing capacity owing to special material properties and design



Select Variant

Article No.		Product Description	L (mm)	W (mm)	H (mm)	t (mm)
Galvanized (vz)	HDG (fvz)					
300260	300261	FXC Mounting Channel 40 80 3, 6 m	6000	40	80	3.0
300270	300271	FXC Mounting Channel 40 80 3, 3 m	3000	40	80	3.0
300280	300281	FXC Mounting Channel 40 80 3, 2 m	2000	40	80	3.0

*Available on request